

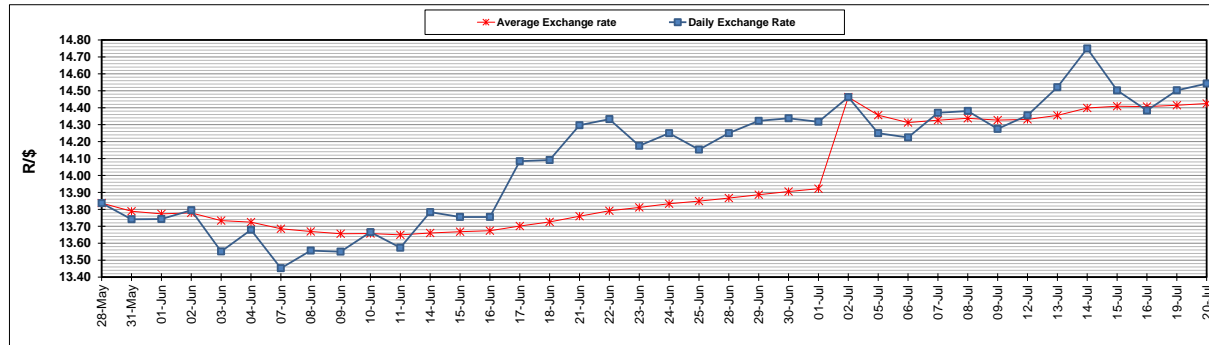
	PETROL 95 ULP	PETROL 93 ULP & LRP	DIESEL 0.05%	DIESEL 0.005%	ILL. PAR.
GAUTENG PUMP PRICE (SA c/l) AS FROM 07/07/2021	1,739.000	1,720.000	-	-	-
WHOLESALE PRICE (SA c/l) AS FROM 07/07/2021	-	-	1,508.620	1,512.020	913.488
SINGLE NATIONAL MAXIMUM RETAIL PRICE	-	-	-	-	1,150.000
BASIC FUEL PRICE - 20/07/2021 (SA c/l)	790.595	777.314	736.752	739.568	718.050
PRESS RELEASE CONTRIBUTION TO BFP 07/07/2021 - 20/07/2021 (SA c/l)	743.170	734.170	721.630	725.030	700.128
UNIT OVER/(UNDER) RECOVERY - 20/07/2021 (SA c/l)	(47.425)	(43.144)	(15.122)	(14.538)	(17.922)
AVERAGE BASIC FUEL PRICE 02/07/2021 - 20/07/2021	815.706	802.400	759.276	762.016	738.354
AVERAGE UNIT OVER/(UNDER) RECOVERY 02/07/2021 - 20/07/2021	(78.536)	(74.922)	(47.338)	(46.448)	(46.534)

### ANALYSIS MOVEMENT OF AVERAGE OVER/(UNDER) RECOVERY

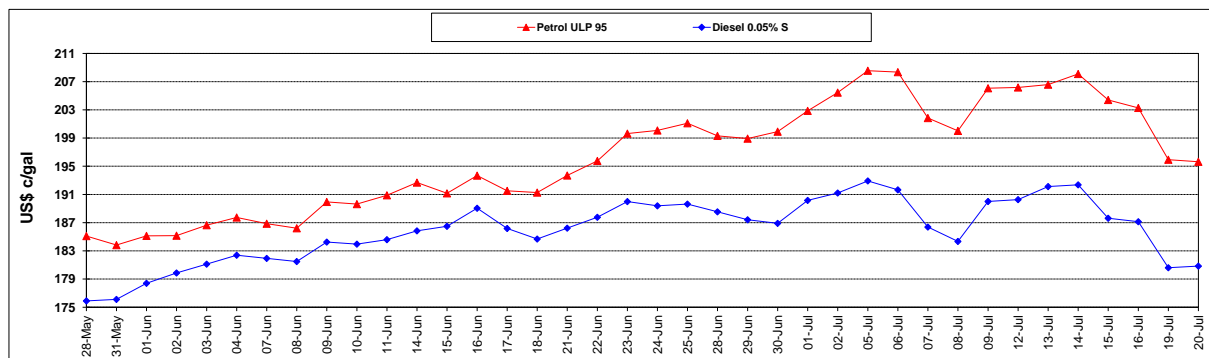
	PETROL 95	PETROL 93	DIESEL 0.05%	DIESEL 0.005%	ILL. PAR.
- MOVEMENT IN INTERNATIONAL PRODUCT PRICES	(50.108)	(46.958)	(20.877)	(19.892)	(20.802)
- MOVEMENT IN EXCHANGE RATE	(28.428)	(27.964)	(26.461)	(26.556)	(25.732)
AVERAGE UNIT OVER/(UNDER) RECOVERY 02/07/2021 - 20/07/2021	(78.536)	(74.922)	(47.338)	(46.448)	(46.534)

R/\$ EXCHANGE RATE - (R/\$14.5425- 20/07/2021)

### EXCHANGE RATE USED IN BASIC FUEL PRICE



### INTERNATIONAL PRODUCT PRICES OF BASKET USED IN BASIC FUEL PRICE



### BASIC FUEL PRICE IN SA CENTS PER LITRE

